

# PRODUCT INFORMATION PACKET

Model No: 056T11G15528

Catalog No: K2110A

1 HP Explosion Proof Motor, 3 phase, 1200 RPM, 230/460 V, 56H Frame, EPFC  
Explosion Proof NEMA Motors



Regal and Marathon are trademarks of Regal Beloit Corporation or one of its affiliated companies.  
©2020 Regal Beloit Corporation, All Rights Reserved. MC017097E

**REGAL**

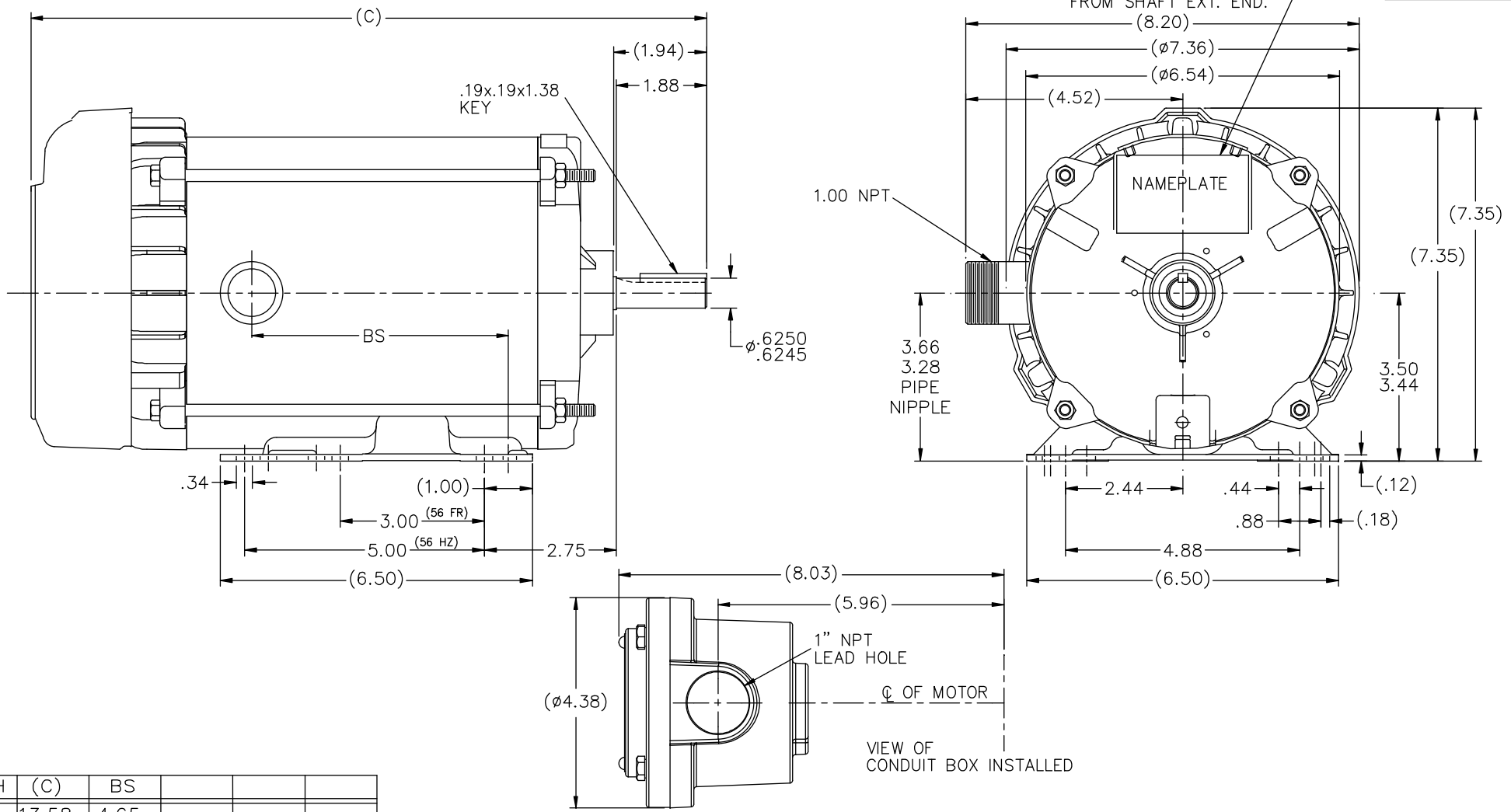


### Nameplate Specifications

Output HP	1 Hp	Output KW	0.75 kW
Frequency	60 Hz	Voltage	230/460 V
Current	3.8/1.9 A	Speed	1140 rpm
Service Factor	1	Phase	3
Efficiency	82.5 %	Power Factor	60
Duty	Continuous	Insulation Class	B
Design Code	B	KVA Code	L
Frame	56H	Enclosure	Explosion Proof Fan cooled
Thermal Protection	Automatic	Ambient Temperature	40 °C
Drive End Bearing Size	6205	Opp Drive End Bearing Size	6203
UL	UL Listed And CSA Certified	CSA	Y
CE	N	IP Code	54
Hazardous Location	EXP PROOF CL I GR C&D CL II GR F&G T3B		

### Technical Specifications

Electrical Type	Squirrel Cage Induction Run	Starting Method	Across The Line
Poles	6	Rotation	Reversible
Resistance Main	0 Ohms	Mounting	Rigid base
Motor Orientation	Horizontal	Drive End Bearing	Ball
Opp Drive End Bearing	Ball	Frame Material	Rolled Steel
Shaft Type	NEMA 56	Overall Length	16.08 in
Frame Length	9.31 in	Shaft Diameter	0.625 in
Shaft Extension	1.94 in	Assembly/Box Mounting	F1 ONLY
Outline Drawing	B-105907-931	Connection Drawing	EE7335

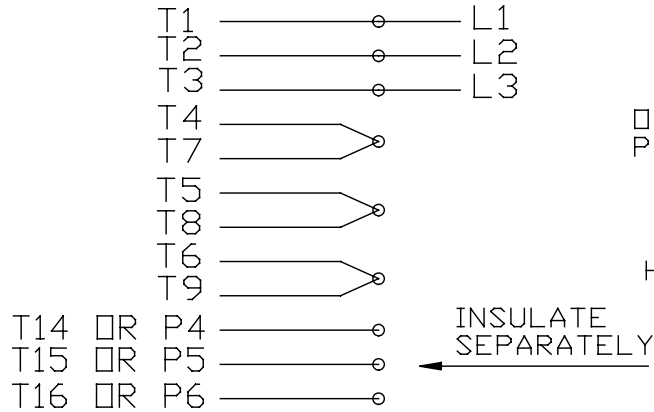


DASH	(C)	BS			
681	13.58	4.65			
731	14.08	5.15	SHOWN		
781	14.58	5.65			
831	15.08	6.15			
881	15.58	6.65			
931	16.08	7.15			
981	16.58	7.65			

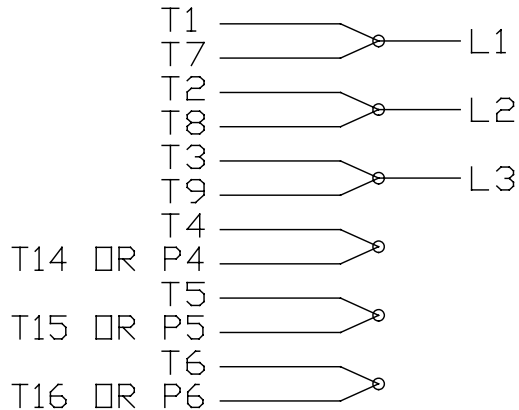
				TOLERANCES UNLESS SPECIFIED		MARATHON ELECTRIC	DRAWN RAD 12-07-07	
				DEC.	INCHES		CHK	VL 12-07-07
				.X	±.1		APPD	RAD 12-07-07
				.XX	±.03	TITLE	SCALE	1=2
2	COND. BOX INSTALLED VIEW UPDATED PER ECR-0044571	UD	10/16/13	ST	.XXX	±.005	REF	
1	REVISED BASE & BRACKET	08-1256	RJW 03-25-2008	ML	.XXXX	±.0005	FMF	
NO.	REVISION	BY & DATE	CHK	ANG	FINISH		PREV	
					RFP	CAD FILE 105907	SIZE	DRAWING NO. PAGE OF REV.
					DIST	WP	B	105907 2

EE7335

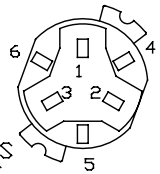
### HIGH VOLTAGE CONNECTIONS



### LOW VOLTAGE CONNECTIONS

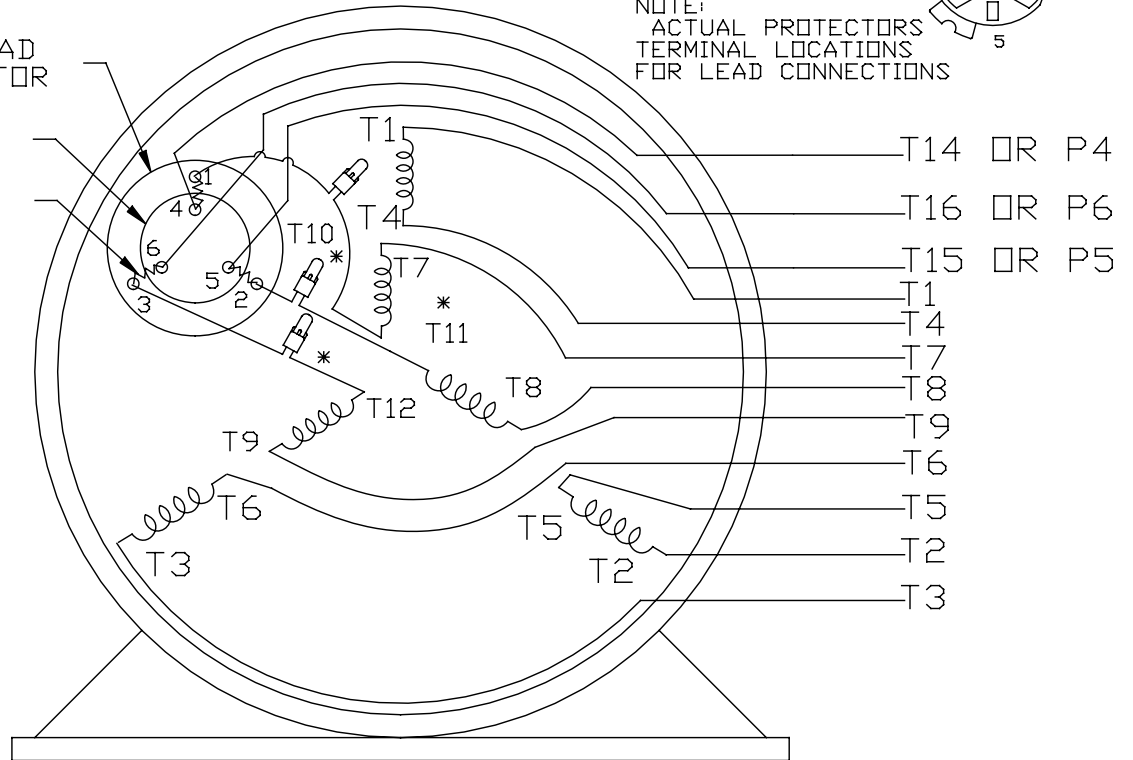


### THREE PHASE - DUAL VOLTAGE MOTOR WITH OVERLOAD PROTECTOR



NOTE:  
ACTUAL PROTECTORS  
TERMINAL LOCATIONS  
FOR LEAD CONNECTIONS

OVERLOAD  
PROTECTOR  
DISC  
HEATER



VIEW OF TERMINAL END

\* USE PRESSURE CONNECTORS FOR MT2 PLANT ONLY

T2K
T4D
T6AN

NO.	REVISION	BY & DATE	CHK	TOLERANCES UNLESS SPECIFIED		FINISH	DRAWN	SCALE	REV.
				DEC.	INCHES				
17	CHANGED LOGO FROM MARATHON TO REGAL	KIR 02/16/16	AB	DEC.	INCHES	<b>Regal Beloit America, Inc.</b>	KL	08-09-1993	17
16	PRESSURE CONNECTORS QUANTITY WAS 6	PVR 10/29/13	GR	.X	±.1		CHK	ML	08/10/1993
15	PRESSURE CONNECTORS ADDED	GR 03/04/13	SR	.XX	±.01		APPD	GK	08/10/1993
14	ADDED ACTUAL PROECTOR VIEW CN 17481	KL 05/18/94		.XXX	±.005		TITLE		SCALE 1=1
13	REDRAWN IN AUTO CAD	KL 08/11/93		.XXXX	±.0005		3Ø-DUAL VOLT WITH OVERLOAD PROTECTO	REF	
						MAT'L.		FMF	
						FINISH		PREV	
			RFP			CAD FILE	EE7335	SIZE	DRAWING NO.
			DIST					A	EE7335

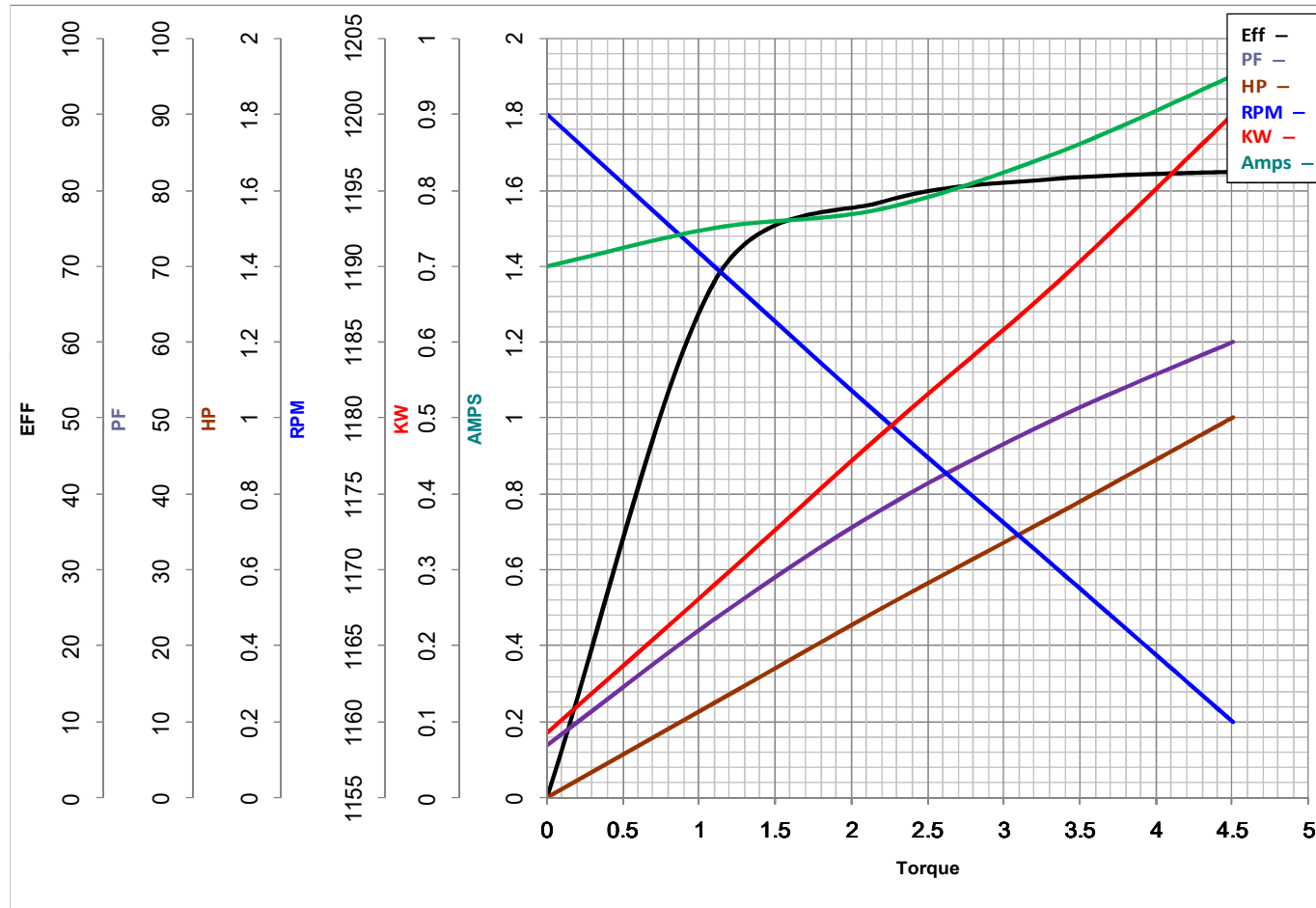
THIS DRAWING IN DESIGN AND DETAIL IS OUR PROPERTY AND MUST NOT BE USED EXCEPT IN CONNECTION WITH OUR WORK ALL RIGHTS OF DESIGN AND INVENTION ARE RESERVED THIS IS AN ELECTRONICALLY GENERATED DOCUMENT - DO NOT SCALE THIS PRINT





**MARATHON ELECTRIC CORPORATION**  
TYPICAL PERFORMANCE CURVE for AC MOTOR

Customer \_\_\_\_\_ Curve at 460 Volts HP 1.00 PHASE 3  
60 HZ  
1 HP VOLTS 230/460  
 Catalog No K2110A HZ 60 RPM 1140



Torque in Lb.Ft

FL TORQUE 4.5 Lb.Ft  
 BD TORQUE 18.4 Lb.Ft  
 LR TORQUE 13.1 Lb.Ft

FL AMPS 3.8/1.9  
 PU TORQUE 11.8 Lb.Ft  
 LR AMPS 11.8

WINDING ZT6139-3

Date 1/23/2019